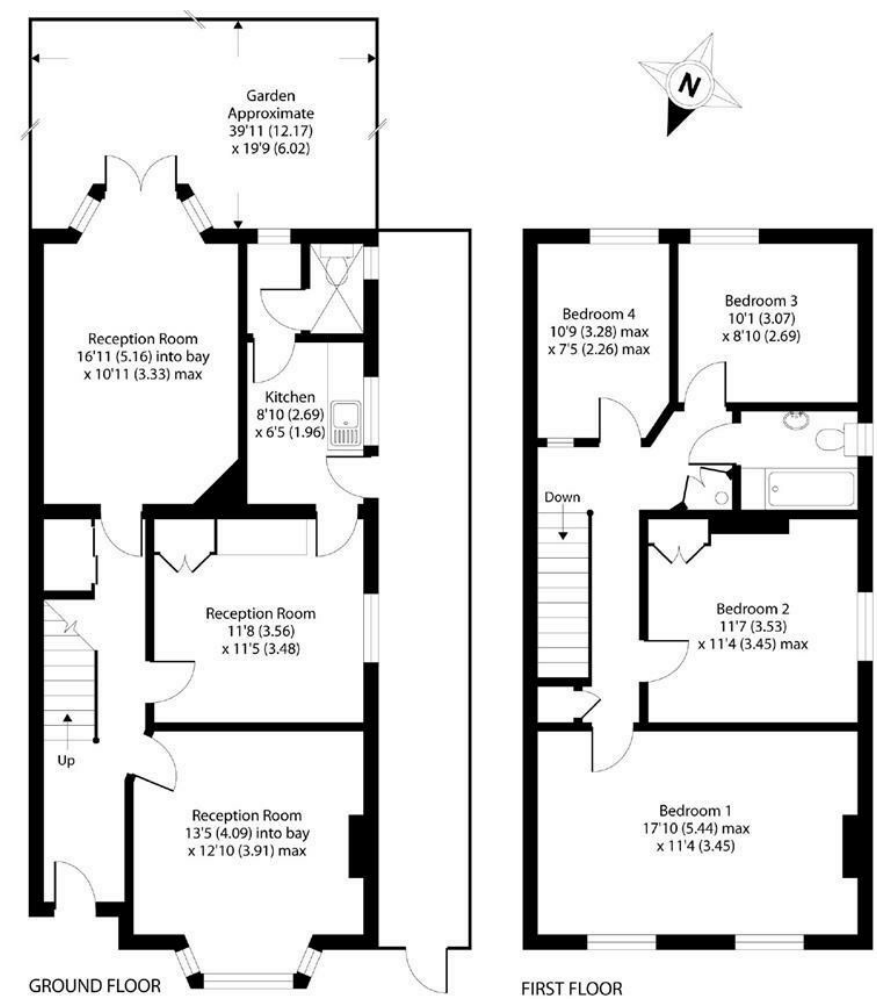
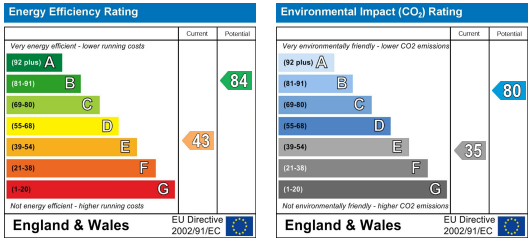


APPROX. GROSS INTERNAL FLOOR AREA 1391 SQ FT 129.2 SQ METRES



Fairfield South  
Kingston Upon Thames KT1 2UW  
£700,000



- Edwardian Semi Detached
- Four Bedrooms
- Opposite Fairfield Green
- Many fine period features
- EPC Rating E
- Halls Adjoining
- In Need Of Modernisation
- Three Reception Rooms
- No Onward Chain





A Substantial four bedroom Edwardian residence situated opposite the open spaces of Fairfield Green.

A substantial Edwardian halls adjoining semi-detached house situated in the sought after Fairfield area directly opposite the pleasant open spaces of Fairfield Park, ideally located for Kingston town centre. The property is in need of modernisation and has retained many original features and the accommodation currently comprises: four bedrooms, bathroom, three reception rooms, Cloak/Wet r room and a kitchen. To the rear of the property there is a 40ft rear garden.



### Situation

Fairfield South is a sought after road situated directly opposite the pleasant open spaces of Fairfield Green, The property is ideally located for Kingston town centre with its array of shops, bars, restaurants and Kingston station which offers a frequent service directly into Waterloo.



Tenure: Freehold  
Local Authority:

